

Octal Buffer and Driver

CJ74ACT244 Logic

1 Introduction

The CJ74ACT244 is octal buffer and driver with 3-state output.

2 Available Packages

| PART NUMBER | PACKAGE |
|-------------|---------|
| CJ74ACT244 | SOP20 |
| | TSSOP20 |

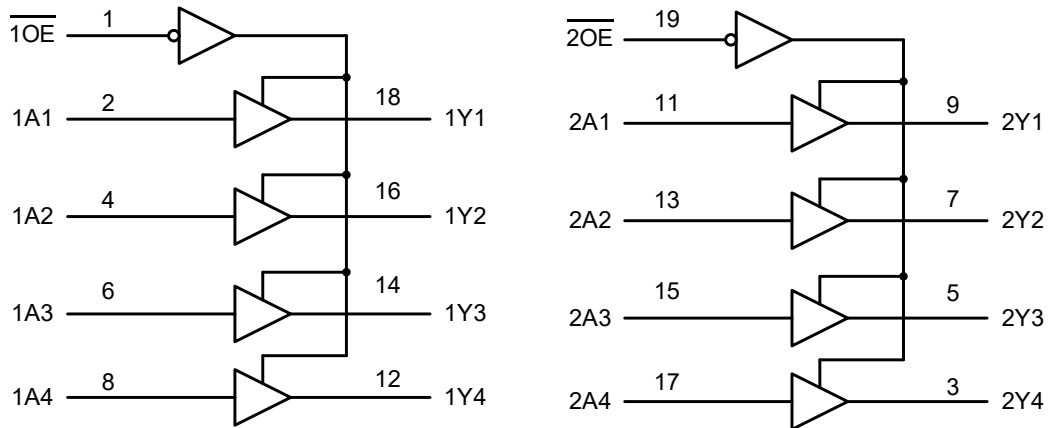
Note: For all available packages, please refer to the part Orderable Information.

3 Features

- Supply voltage range:4.5V to 5.5V
- Input levels: TTL level
- Temperature from -40°C to +125°C

4 Applications

- LED displays
- Servers and telecommunication
- Switching networks



Logic diagram

5 Orderable Information

| DEVICE | PACKAGE | OP TEMP | ECO PLAN | MSL | PACKING OPTION | SORT |
|---------------|---------|-----------|--------------|------------------|------------------------------------|--------|
| CJ74ACT244AGN | SOP20 | -40~125°C | RoHS & Green | Level 3 168HR | Tape and Reel 2000 Units / Reel | Active |
| CJ74ACT244BGN | TSSOP20 | -40~125°C | RoHS & Green | Level 3 168HR | Tape and Reel 4000 Units / Reel | Active |

Note:

ECO PLAN: For the RoHS and Green certification standards of this product, please refer to the official report provided by JSCJ.

MSL: Moisture Sensitivity Level. Determined according to JEDEC industry standard classification.

SORT: Specifically defined as follows:

Active: Recommended for new products;

Customized: Products manufactured to meet the specific needs of customers;

Preview: The device has been released and has not been fully mass produced. The sample may or may not be available;

NoRD: It is not recommended to use the device for new design. The device is only produced for the needs of existing customers;

Obsolete: The device has been discontinued.

6 Pin Configuration and Marking Information

6.1 Pin Configuration

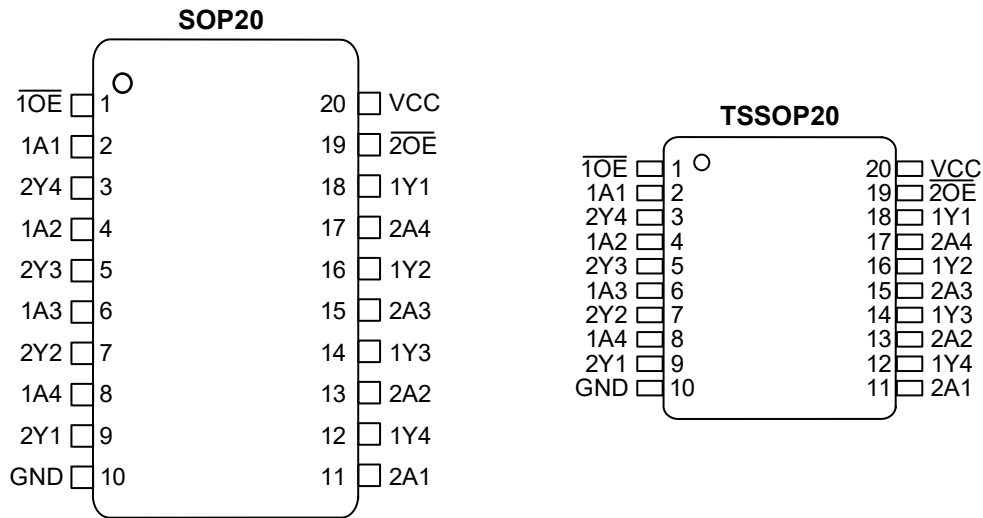


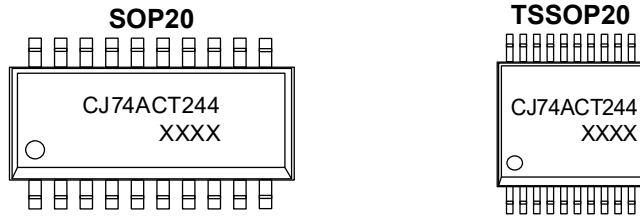
Figure 6-1 Pin configuration

6.2 Pin Function

| PIN | | I/O ⁽¹⁾ | DESCRIPTION |
|-----|------------------|--------------------|----------------|
| No. | NAME | | |
| 1 | $\overline{1OE}$ | I | Enable input |
| 2 | 1A1 | I | Data input |
| 3 | 2Y4 | O | Data output |
| 4 | 1A2 | I | Data input |
| 5 | 2Y3 | O | Data output |
| 6 | 1A3 | I | Data input |
| 7 | 2Y2 | O | Data output |
| 8 | 1A4 | I | Data input |
| 9 | 2Y1 | O | Data output |
| 10 | GND | G | Ground (0V) |
| 11 | 2A1 | I | Data input |
| 12 | 1Y4 | O | Data output |
| 13 | 2A2 | I | Data input |
| 14 | 1Y3 | O | Data output |
| 15 | 2A3 | I | Data input |
| 16 | 1Y2 | O | Data output |
| 17 | 2A4 | I | Data input |
| 18 | 1Y1 | O | Data output |
| 19 | $\overline{2OE}$ | I | Enable input |
| 20 | VCC | P | Supply voltage |

(1) I-Input, O-Output, P-Power, G-Ground.

6.3 Marking Information



XXXX: Code, indicates weekly record information.

7 Specifications

7.1 Absolute Maximum Ratings

Voltages are referenced to GND(ground=0V), unless otherwise specified.

| SYMBOL | PARAMETER | CONDITIONS | | MIN. | MAX. | UNIT |
|-----------|---------------------------|------------------------------|-----------|------|----------|------|
| V_{CC} | Supply voltage | - | | -0.5 | +7 | V |
| I_{CC} | Continuous supply current | - | | - | 200 | mA |
| I_{GND} | Continuous ground current | - | | -200 | - | mA |
| I_{IK} | Input clamping current | $V_I < 0V$ or $V_I > V_{CC}$ | | - | ± 20 | mA |
| I_{OK} | Output clamping current | $V_O < 0V$ or $V_O > V_{CC}$ | | - | ± 20 | mA |
| I_O | Continuous output current | $V_O = 0$ to V_{CC} | | - | ± 50 | mA |
| T_{stg} | Storage temperature | - | | -65 | +150 | °C |
| T_L | Soldering temperature | 10s | SOP/TSSOP | - | 260 | °C |

Note: Absolute maximum ratings indicate sustained limits beyond which damage to the device may occur. All voltage parameters are absolute voltages referenced to GND. The thermal resistance and power dissipation ratings are measured under board mounted and still air conditions.

7.2 Recommended Operating Conditions

| SYMBOL | PARAMETER | CONDITIONS | MIN. | TYP. | MAX. | UNIT |
|-----------|---------------------------|------------|------|------|----------|------|
| V_{CC} | Supply voltage | - | 4.5 | - | 5.5 | V |
| V_I | Input voltage | - | 0 | - | V_{CC} | V |
| V_O | Output voltage | - | 0 | - | V_{CC} | V |
| I_{OH} | High-level output current | - | - | - | -24 | mA |
| I_{OL} | Low-level output current | - | - | - | 24 | mA |
| T_{amb} | Ambient temperature | - | -40 | - | +125 | °C |

7.3 Electrical Characteristics
7.3.1 DC Characteristics 1

$T_{amb} = -40^{\circ}\text{C}$ to $+85^{\circ}\text{C}$, voltages are referenced to GND (ground=0V), unless otherwise specified.

| SYMBOL | PARAMETER | CONDITIONS | MIN. | TYP. | MAX. | UNIT |
|-----------------|---------------------------|---|------|-------|---------|---------------|
| V_{IH} | HIGH-level input voltage | $V_{CC}=4.5$ to 5.5V | 2 | - | - | V |
| V_{IL} | LOW-level input voltage | $V_{CC}=4.5$ to 5.5V | - | - | 0.8 | V |
| V_{OH} | HIGH-level output voltage | $V_{CC}=4.5\text{V}; I_o=-50\mu\text{A}$ | 4.4 | 4.49 | - | V |
| | | $V_{CC}=4.5\text{V}; I_o=-24\text{mA}$ | 3.76 | - | - | V |
| | | $V_{CC}=5.5\text{V}; I_o=-50\mu\text{A}$ | 5.4 | - | - | V |
| | | $V_{CC}=5.5\text{V}; I_o=-24\text{mA}$ | 4.76 | - | - | V |
| | | $V_{CC}=5.5\text{V}; I_o=-75\text{mA}$ | 3.85 | - | - | V |
| V_{OL} | LOW-level output voltage | $V_{CC}=4.5\text{V}; I_o=50\mu\text{A}$ | - | 0.001 | 0.1 | V |
| | | $V_{CC}=4.5\text{V}; I_o=24\text{mA}$ | - | - | 0.5 | V |
| | | $V_{CC}=5.5\text{V}; I_o=50\mu\text{A}$ | - | 0.001 | 0.1 | V |
| | | $V_{CC}=5.5\text{V}; I_o=24\text{mA}$ | - | - | 0.44 | V |
| | | $V_{CC}=5.5\text{V}; I_o=75\text{mA}$ | - | - | 1.65 | V |
| I_I | Input leakage current | $V_{CC}=5.5\text{V}; V_I=V_{CC}$ or GND | - | - | ± 1 | μA |
| I_{CC} | Supply current | $V_{CC}=5.5\text{V}; V_I=V_{CC}$ or GND; $I_o=0\text{A}$ | - | - | 40 | μA |
| ΔI_{CC} | Additional supply current | $V_{CC}=5.5\text{V}$; One input at $V_I=V_{CC}-2.1\text{V}$; Other inputs at V_{CC} or GND; $I_o=0\text{A}$ | - | - | 1.5 | mA |

7.3.2 DC Characteristics 2

T_{amb}=-40°C to +125°C, voltages are referenced to GND (ground=0V), unless otherwise specified.

| SYMBOL | PARAMETER | CONDITIONS | MIN. | TYP. | MAX. | UNIT |
|------------------|---------------------------|---|------|------|------|------|
| V _{IH} | HIGH-level input voltage | V _{CC} =4.5 to 5.5V | 2 | - | - | V |
| V _{IL} | LOW-level input voltage | V _{CC} =4.5 to 5.5V | - | - | 0.8 | V |
| V _{OH} | HIGH-level output voltage | V _{CC} =4.5V; I _o =-50uA | 4.4 | - | - | V |
| | | V _{CC} =4.5V; I _o =-24mA | 3.76 | - | - | V |
| | | V _{CC} =5.5V; I _o =-50uA | 5.4 | - | - | V |
| | | V _{CC} =5.5V; I _o =-24mA | 4.76 | - | - | V |
| | | V _{CC} =5.5V; I _o =-75mA | 3.85 | - | - | V |
| V _{OL} | LOW-level output voltage | V _{CC} =4.5V; I _o =50uA | - | - | 0.1 | V |
| | | V _{CC} =4.5V; I _o =24mA | - | - | 0.5 | V |
| | | V _{CC} =5.5V; I _o =50uA | - | - | 0.1 | V |
| | | V _{CC} =5.5V; I _o =24mA | - | - | 0.44 | V |
| | | V _{CC} =5.5V; I _o =75mA | - | - | 1.65 | V |
| I _I | Input leakage current | V _{CC} =5.5V; V _I =V _{CC} or GND | - | - | ±1 | uA |
| I _{CC} | Supply current | V _{CC} =5.5V; V _I =V _{CC} or GND; I _o =0A | - | - | 40 | uA |
| ΔI _{CC} | Additional supply current | V _{CC} =5.5V; One input at V _I =V _{CC} -2.1V; Other inputs at V _{CC} or GND; I _o =0A | - | - | 1.5 | mA |

7.3.3 AC Characteristics 1

T_{amb}=-40°C to +85°C, voltages are referenced to GND (ground=0V), unless otherwise specified.

| SYMBOL | PARAMETER | CONDITIONS | MIN. | TYP. | MAX. | UNIT |
|-------------------------------------|------------------------------|---|------|------|------|------|
| t _{PLH} , t _{PHL} | nAn to nYn propagation delay | See Figure 8-3 V _{CC} =5.5V; C _L =50pF; R _L =50Ω | 1.5 | - | 10 | ns |
| t _{PZH} , t _{PZL} | nOE to nAn/nYn enable time | See Figure 8-4 V _{CC} =5.5V; C _L =50pF; R _L =50Ω | 1.0 | - | 10.5 | ns |
| t _{PLZ} , t _{PHZ} | nOE to nAn/nYn enable time | See Figure 8-4 V _{CC} =5.5V; C _L =50pF; R _L =50Ω | 1.5 | - | 10.5 | ns |

7.3.4 AC Characteristics 2

T_{amb}=-40°C to +125°C, voltages are referenced to GND (ground=0V), unless otherwise specified.

| SYMBOL | PARAMETER | CONDITIONS | MIN. | TYP. | MAX. | UNIT |
|-------------------------------------|------------------------------|---|------|------|------|------|
| t _{PLH} , t _{PHL} | nAn to nYn propagation delay | See Figure 8-3 V _{CC} =5.5V; C _L =50pF; R _L =50Ω | - | - | 12 | ns |
| t _{PZH} , t _{PZL} | nOE to nAn/nYn enable time | See Figure 8-4 V _{CC} =5.5V; C _L =50pF; R _L =50Ω | - | - | 12.5 | ns |
| t _{PLZ} , t _{PHZ} | nOE to nAn/nYn enable time | See Figure 8-4 V _{CC} =5.5V; C _L =50pF; R _L =50Ω | - | - | 12.5 | ns |

8 Detailed Description

8.1 Overview

The CJ74ACT244 is octal buffer and driver with 3-state output.

8.2 Functional Block Diagram

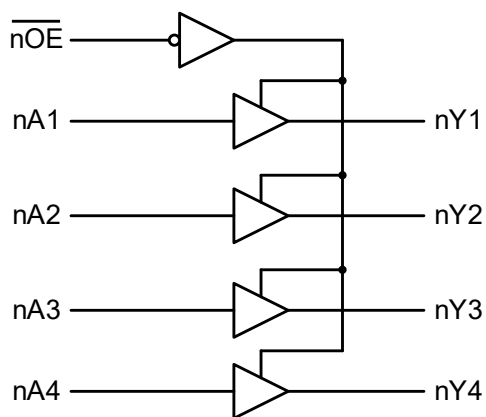


Figure 8-1 Logic symbol

8.3 Function Table⁽¹⁾

| INPUT | | OUTPUT |
|------------------|-------|--------|
| \overline{nOE} | nAn | nYn |
| L | H | H |
| L | L | L |
| H | X | Z |

(1) H=HIGH voltage level; L=LOW voltage level; X=don't care; Z=high-impedance OFF-state.

8.4 Testing Circuit

8.4.1 AC Testing Circuit

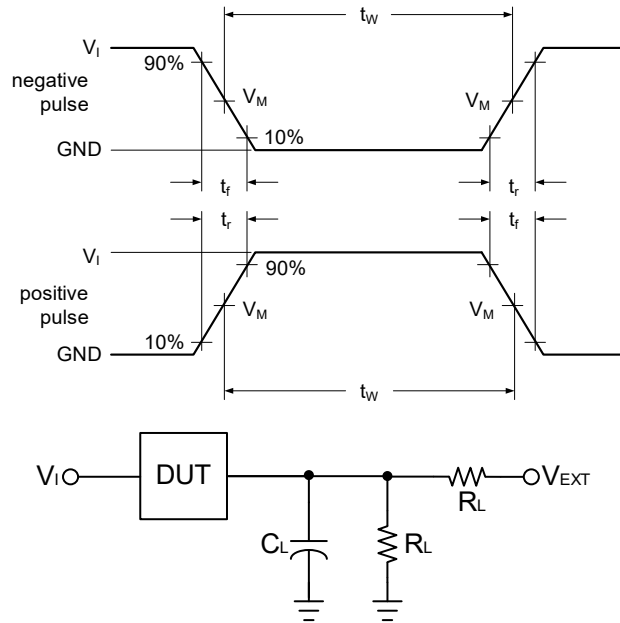


Figure 8-2 Test circuit for measuring switching times

Definitions for test circuit:

C_L includes probe and jig capacitance.

8.4.2 AC Testing Waveforms

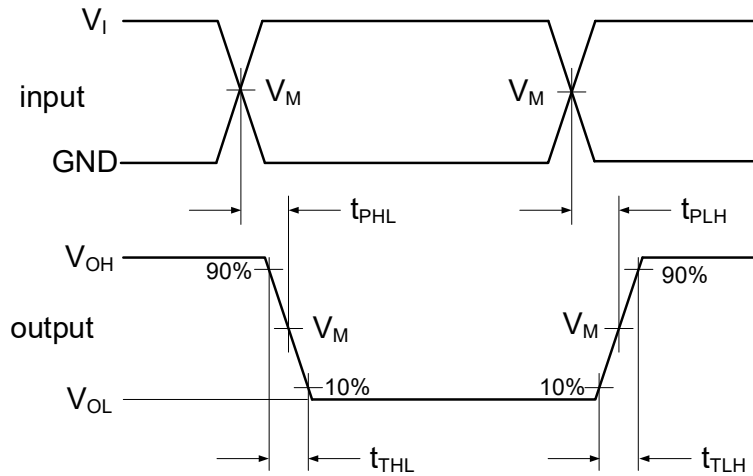


Figure 8-3 The data input (A) to output (Y) propagation delays

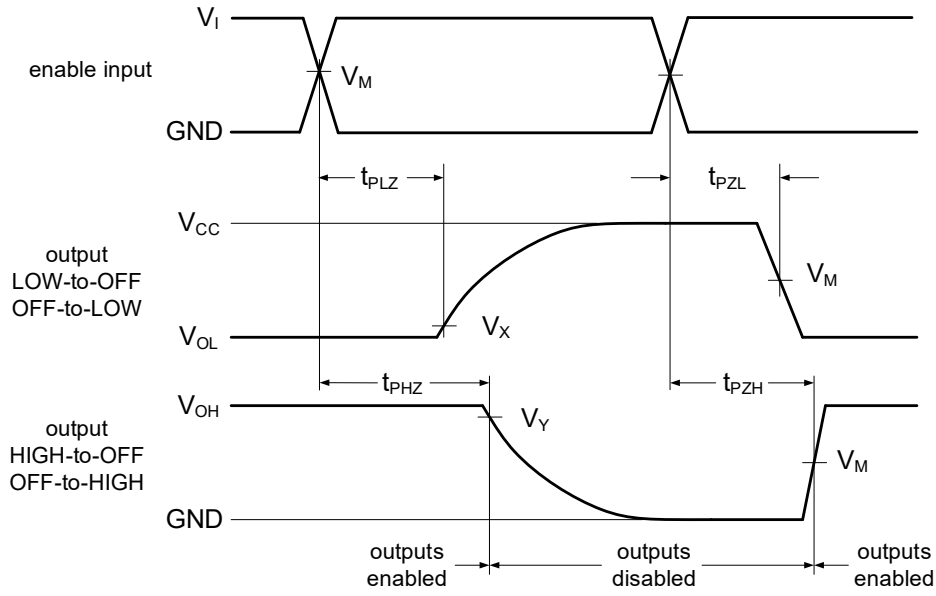


Figure 8-4 3-state enable and disable times

8.4.3 Measurement Points

| SUPPLY VOLTAGE | INPUT | OUTPUT | | |
|----------------|---------------------|---------------------|-----------------|-----------------|
| V_{CC} | V_M | V_M | V_X | V_Y |
| 5.5V | $0.5 \times V_{CC}$ | $0.5 \times V_{CC}$ | $V_{OL} + 0.3V$ | $V_{OH} - 0.3V$ |

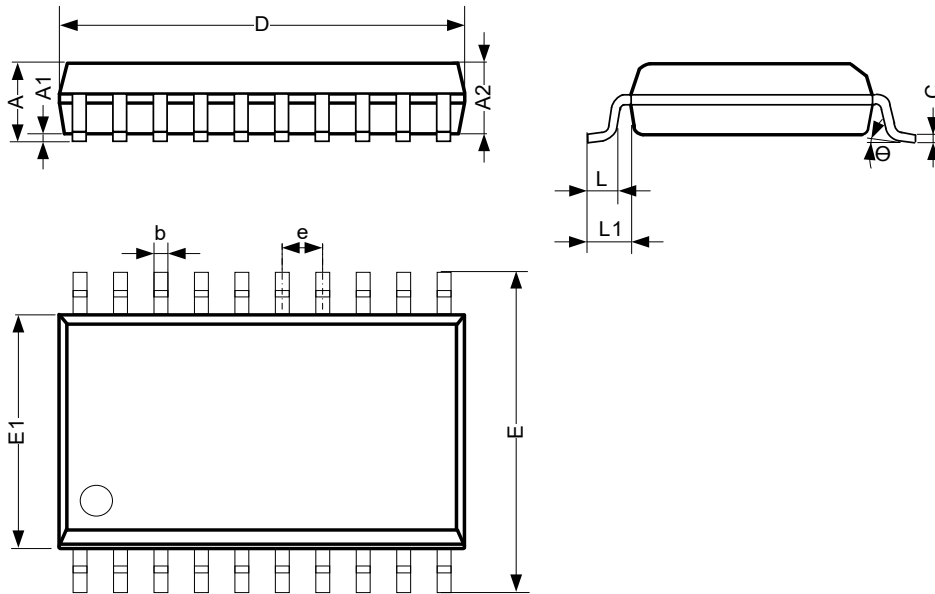
8.4.4 Test Data

| SUPPLY VOLTAGE | INPUT | | LOAD | | V_{EXT} | | |
|----------------|----------|-------------|-------|-------|-------------------|-------------------|-------------------|
| V_{CC} | V_I | $t_r = t_f$ | C_L | R_L | t_{PLH}/t_{PHL} | t_{PLZ}/t_{PZL} | t_{PHZ}/t_{PZH} |
| 5.5V | V_{CC} | 3.0ns | 50pF | 500Ω | Open | $2 \times V_{CC}$ | GND |

9 Mechanical Information

9.1 SOP20 Mechanical Information

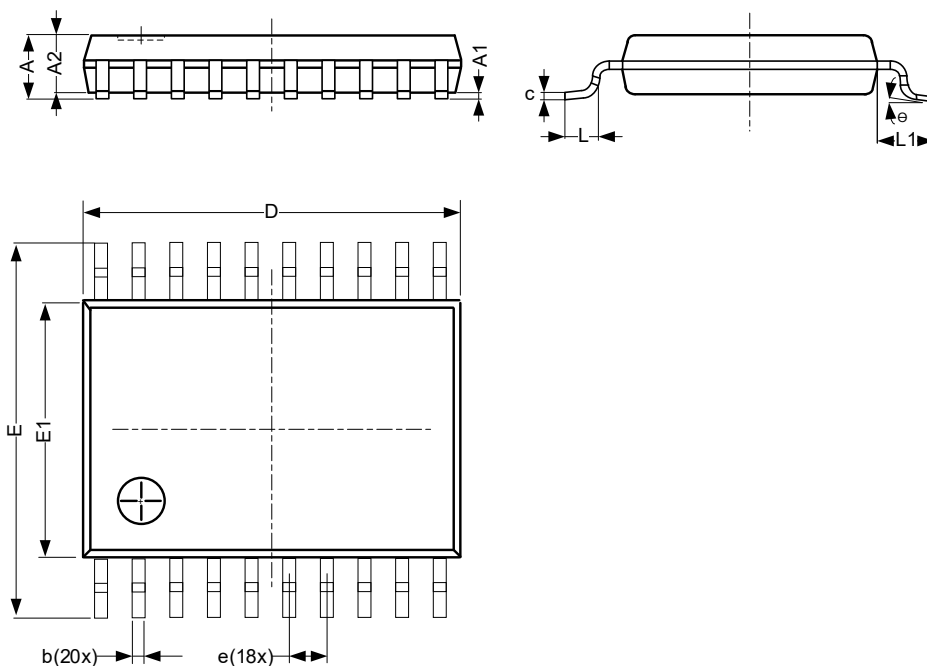
9.1.1 SOP20 Outline Dimensions



| SYMBOL | Dimensions In Millimeters | | |
|----------|---------------------------|------|-------|
| | Min. | Typ. | Max. |
| A | 2.47 | - | 2.65 |
| A1 | 0.05 | - | 0.30 |
| A2 | 2.20 | - | 2.44 |
| b | 0.35 | - | 0.50 |
| c | 0.15 | - | 0.30 |
| D | 12.54 | - | 12.94 |
| E | 10.00 | - | 10.60 |
| E1 | 7.30 | - | 7.70 |
| e | 1.27 BSC | | |
| L | 0.40 | - | 1.05 |
| L1 | 1.30 | - | 1.50 |
| Θ | 0° | - | 8° |
| Unit: mm | | | |

9.2 TSSOP20 Mechanical Information

9.2.1 TSSOP20 Outline Dimensions



| SYMBOL | Dimensions In Millimeters | | |
|----------|---------------------------|------|------|
| | Min. | Typ. | Max. |
| A | - | - | 1.20 |
| A1 | 0.05 | - | 0.15 |
| A2 | 0.80 | - | 1.05 |
| b | 0.19 | - | 0.30 |
| c | 0.09 | - | 0.20 |
| D | 6.40 | - | 6.60 |
| E | 6.20 | - | 6.60 |
| E1 | 4.30 | - | 4.50 |
| e | 0.65 BSC | | |
| L | 0.45 | - | 0.75 |
| L1 | - | 1.00 | - |
| θ | 0° | - | 8° |
| Unit: mm | | | |

10 Notes and Revision History

10.1 Associated Product Family and Others

To view other products of the same type or IC products of other types, click the official website of JSCJ -- <https://www.jscj-elec.com> for more details.

10.2 Notes

Electrostatic Discharge Caution



This IC may be damaged by ESD. Relevant personnel shall comply with correct installation and use specifications to avoid ESD damage to the IC. If appropriate measures are not taken to prevent ESD damage, the hazards caused by ESD include but are not limited to degradation of integrated circuit performance or complete damage of integrated circuit. For some precision integrated circuits, a very small parameter change may cause the whole device to be inconsistent with its published specifications.

DISCLAIMER

IMPORTANT NOTICE, PLEASE READ CAREFULLY

The information in this data sheet is intended to describe the operation and characteristics of our products. JSCJ has the right to make any modification, enhancement, improvement, correction or other changes to any content in this data sheet, including but not limited to specification parameters, circuit design and application information, without prior notice.

Any person who purchases or uses JSCJ products for design shall: 1. Select products suitable for circuit application and design; 2. Design, verify and test the rationality of circuit design; 3. Procedures to ensure that the design complies with relevant laws and regulations and the requirements of such laws and regulations. JSCJ makes no warranty or representation as to the accuracy or completeness of the information contained in this data sheet and assumes no responsibility for the application or use of any of the products described in this data sheet.

Without the written consent of JSCJ, this product shall not be used in occasions requiring high quality or high reliability, including but not limited to the following occasions: medical equipment, military facilities and aerospace. JSCJ shall not be responsible for casualties or property losses caused by abnormal use or application of this product.

Official Website: www.jscj-elec.com

Copyright © JIANGSU CHANGJING ELECTRONICS TECHNOLOGY CO., LTD