

**Octal D-type Transparent Latch: 3-state**

**CJ74HC/HCT573**      Logic

**1 Introduction**

The CJ74HC/HCT573 is an 8-bit D-type transparent latch with 3-state outputs. The device features latch enable (LE) and output enable (/OE) inputs. When LE is HIGH, data at the inputs enter the latches. In this condition the latches are transparent, a latch output will change each time its corresponding D-input changes. When LE is LOW the latches store the information that was present at the inputs a set-up time preceding the HIGH-to-LOW transition of LE. A HIGH on /OE causes the outputs to assume a high-impedance OFF-state. Operation of the /OE input does not affect the state of the latches. Inputs include clamp diodes. This enables the use of current limiting resistors to interface inputs to voltages in excess of V<sub>CC</sub>.

**2 Available Packages**

PART NUMBER	PACKAGE
CJ74HC573	SOP20
	TSSOP20
CJ74HCT573	SOP20
	TSSOP20

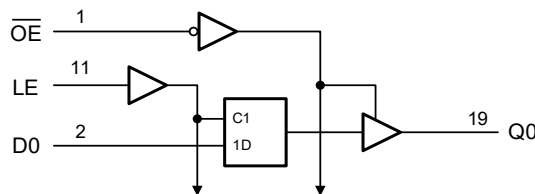
**Note:** For all available packages, please refer to the part Orderable Information.

**3 Features**

- Input levels:
  - For CJ74HC573: CMOS level
  - For CJ74HCT573: TTL level
- Inputs and outputs on opposite sides of package allowing easy interface with microprocessors
- Useful as input or output port for microprocessors and microcomputers
- 3-state non-inverting outputs for bus-oriented applications
- Common 3-state output enable input
- Specified from -40°C to +125°C

**4 Applications**

- Buffer Registers
- Bidirectional Bus Drivers
- Working Registers



Logic diagram

**5 Orderable Information**

DEVICE	PACKAGE	OP TEMP	ECO PLAN	MSL	PACKING OPTION	SORT
CJ74HC573AGN	SOP20	-40~125°C	RoHS & Green	Level 3 168HR	Tape and Reel 2000 Units / Reel	Active
CJ74HCT573AGN	SOP20	-40~125°C	RoHS & Green	Level 3 168HR	Tape and Reel 2000 Units / Reel	Active
CJ74HC573BGN	TSSOP20	-40~125°C	RoHS & Green	Level 3 168HR	Tape and Reel 4000 Units / Reel	Active
CJ74HCT573BGN	TSSOP20	-40~125°C	RoHS & Green	Level 3 168HR	Tape and Reel 4000 Units / Reel	Active

**Note:**

**ECO PLAN:** For the RoHS and Green certification standards of this product, please refer to the official report provided by JSCJ.

**MSL:** Moisture Sensitivity Level. Determined according to JEDEC industry standard classification.

**SORT:** Specifically defined as follows:

Active: Recommended for new products;

Customized: Products manufactured to meet the specific needs of customers;

Preview: The device has been released and has not been fully mass produced. The sample may or may not be available;

NoRD: It is not recommended to use the device for new design. The device is only produced for the needs of existing customers;

Obsolete: The device has been discontinued.

## 6 Pin Configuration and Marking Information

### 6.1 Pin Configuration

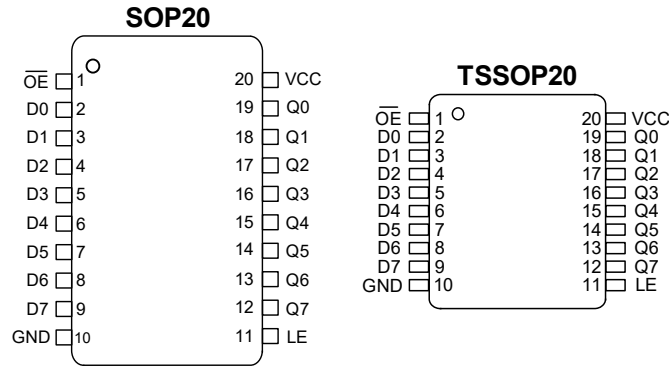


Figure 6-1 Pin configuration

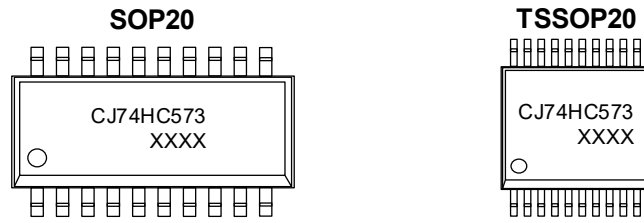
### 6.2 Pin Function

PIN		I/O <sup>(1)</sup>	DESCRIPTION
No.	NAME		
1	$\overline{OE}$	I	3-state output enable input (active LOW)
2	D0	I	Data input
3	D1	I	Data input
4	D2	I	Data input
5	D3	I	Data input
6	D4	I	Data input
7	D5	I	Data input
8	D6	I	Data input
9	D7	I	Data input
10	GND	G	Ground (0V)
11	LE	I	Latch enable input (active HIGH)
12	Q7	O	3-state latch output
13	Q6	O	3-state latch output
14	Q5	O	3-state latch output
15	Q4	O	3-state latch output
16	Q3	O	3-state latch output
17	Q2	O	3-state latch output
18	Q1	O	3-state latch output
19	Q0	O	3-state latch output
20	VCC	P	Supply voltage

(1) I-Input, O-Output, P-Power, G-Ground

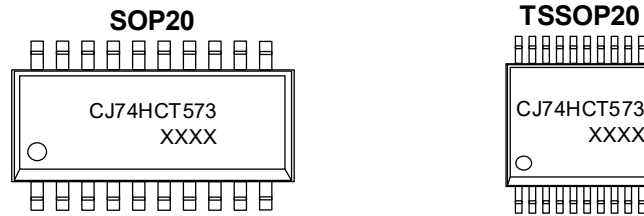
6.3 Marking Information

6.3.1 CJ74HC573



XXXX: Code, indicates weekly record information.

6.3.2 CJ74HCT573



XXXX: Code, indicates weekly record information.

## 7 Specifications

### 7.1 Absolute Maximum Ratings

Voltages are referenced to GND (ground=0V), unless otherwise specified.

SYMBOL	PARAMETER	CONDITIONS		MIN.	MAX.	UNIT
V <sub>CC</sub>	Supply voltage	-		-0.5	+7.0	V
I <sub>IK</sub>	Input clamping current	V <sub>I</sub> < -0.5V or V <sub>I</sub> > V <sub>CC</sub> +0.5V		-	±20	mA
I <sub>OK</sub>	Output clamping current	V <sub>O</sub> < -0.5V or V <sub>O</sub> > V <sub>CC</sub> +0.5V		-	±20	mA
I <sub>O</sub>	Output current	V <sub>O</sub> = -0.5V to (V <sub>CC</sub> +0.5V)		-	±35	mA
I <sub>CC</sub>	Supply current	-		-	+70	mA
I <sub>GND</sub>	Ground current	-		-70	-	mA
T <sub>stg</sub>	Storage temperature	-		-65	+150	°C
P <sub>tot</sub>	Total power dissipation	-		-	500	mW
T <sub>L</sub>	Soldering temperature	10s	SOP/TSSOP	-	260	°C

**Note:** Absolute maximum ratings indicate sustained limits beyond which damage to the device may occur. All voltage parameters are absolute voltages referenced to GND. The thermal resistance and power dissipation ratings are measured under board mounted and still air conditions.

### 7.2 Recommended Operating Conditions

SYMBOL	PARAMETER	CONDITIONS	MIN.	TYP.	MAX.	UNIT
<b>CJ74HC573</b>						
V <sub>CC</sub>	Supply voltage	-	2.0	5.0	6.0	V
V <sub>I</sub>	Input voltage	-	0	-	V <sub>CC</sub>	V
V <sub>O</sub>	Output voltage	-	0	-	V <sub>CC</sub>	V
Δt/ΔV	Input transition rise and fall rate	V <sub>CC</sub> =2.0V	-	-	625	ns/V
		V <sub>CC</sub> =4.5V	-	1.67	139	ns/V
		V <sub>CC</sub> =6.0V	-	-	83	ns/V
T <sub>amb</sub>	Ambient temperature	-	-40	-	+125	°C
<b>CJ74HCT573</b>						
V <sub>CC</sub>	Supply voltage	-	4.5	5.0	5.5	V
V <sub>I</sub>	Input voltage	-	0	-	V <sub>CC</sub>	V
V <sub>O</sub>	Output voltage	-	0	-	V <sub>CC</sub>	V
Δt/ΔV	Input transition rise and fall rate	V <sub>CC</sub> =4.5V	-	1.67	139	ns/V
T <sub>amb</sub>	Ambient temperature	-	-40	-	+125	°C

### 7.3 ESD Ratings

SYMBOL	ESD RATINGS		VALUE	UNIT
V <sub>ESD-HBM</sub>	Electrostatic discharge	Human body model (HBM) <sup>(1)</sup>	±4000	V

(1) JEDEC document JEP155 states that 500-V HBM allows safe manufacturing with a standard ESD control process.

**7.4 Electrical Characteristics**
**7.4.1 DC Characteristics 1**
 $T_{amb} = 25^{\circ}\text{C}$ , voltages are referenced to GND (ground=0V), unless otherwise specified.

SYMBOL	PARAMETER	CONDITIONS		MIN.	TYP.	MAX.	UNIT
<b>CJ74HC573</b>							
$V_{IH}$	HIGH-level input voltage	$V_{CC}=2.0\text{V}$		1.5	-	-	V
		$V_{CC}=4.5\text{V}$		3.15	-	-	V
		$V_{CC}=6.0\text{V}$		4.2	-	-	V
$V_{IL}$	LOW-level input voltage	$V_{CC}=2.0\text{V}$		-	-	0.5	V
		$V_{CC}=4.5\text{V}$		-	-	1.35	V
		$V_{CC}=6.0\text{V}$		-	-	1.8	V
$V_{OH}$	HIGH-level output voltage	$V_I=V_{IH}$ or $V_{IL}$	$I_O=-20\mu\text{A}; V_{CC}=2.0\text{V}$	1.9	2.0	-	V
			$I_O=-20\mu\text{A}; V_{CC}=4.5\text{V}$	4.4	4.5	-	V
			$I_O=-20\mu\text{A}; V_{CC}=6.0\text{V}$	5.9	6.0	-	V
			$I_O=-6.0\text{mA}; V_{CC}=4.5\text{V}$	3.98	4.32	-	V
			$I_O=-7.8\text{mA}; V_{CC}=6.0\text{V}$	5.48	5.81	-	V
$V_{OL}$	LOW-level output voltage	$V_I=V_{IH}$ or $V_{IL}$	$I_O=20\mu\text{A}; V_{CC}=2.0\text{V}$	-	0	0.1	V
			$I_O=20\mu\text{A}; V_{CC}=4.5\text{V}$	-	0	0.1	V
			$I_O=20\mu\text{A}; V_{CC}=6.0\text{V}$	-	0	0.1	V
			$I_O=6.0\text{mA}; V_{CC}=4.5\text{V}$	-	0.15	0.26	V
			$I_O=7.8\text{mA}; V_{CC}=6.0\text{V}$	-	0.16	0.26	V
$I_I$	Input leakage current	$V_I=V_{CC}$ or GND; $V_{CC}=6.0\text{V}$		-	-	$\pm 1.0$	$\mu\text{A}$
$I_{OZ}$	OFF-state output current	$V_I=V_{IH}$ or $V_{IL}; V_{CC}=6.0\text{V}; V_O=V_{CC}$ or GND		-	-	$\pm 1.0$	$\mu\text{A}$
$I_{CC}$	Supply current	$V_I=V_{CC}$ or GND; $I_O=0\text{A}; V_{CC}=6.0\text{V}$		-	-	8.0	$\mu\text{A}$
$C_i$	Input capacitance			-	3.5	-	pF
<b>CJ74HCT573</b>							
$V_{IH}$	HIGH-level input voltage	$V_{CC}=4.5\text{V}$ to $5.5\text{V}$		2.0	-	-	V
$V_{IL}$	LOW-level input voltage	$V_{CC}=4.5\text{V}$ to $5.5\text{V}$		-	-	0.8	V
$V_{OH}$	HIGH-level output voltage	$V_I = V_{IH}$ or $V_{IL}; V_{CC}=4.5\text{V}$	$I_O=-20\mu\text{A}$	4.4	4.5	-	V
			$I_O=-6.0\text{mA}$	3.98	4.32	-	V
$V_{OL}$	LOW-level output voltage	$V_I = V_{IH}$ or $V_{IL}; V_{CC}=4.5\text{V}$	$I_O=20\mu\text{A}$	-	0	0.1	V
			$I_O=6.0\text{mA}$	-	0.16	0.26	V
$I_I$	Input leakage current	$V_I=V_{CC}$ or GND; $V_{CC}=5.5\text{V}$		-	-	$\pm 1.0$	$\mu\text{A}$
$I_{OZ}$	OFF-state output current	$V_I=V_{IH}$ or $V_{IL}; V_{CC}=5.5\text{V}; V_O=V_{CC}$ or GND		-	-	$\pm 1.0$	$\mu\text{A}$
$I_{CC}$	Supply current	$V_I=V_{CC}$ or GND; $I_O=0\text{A}; V_{CC}=5.5\text{V}$		-	-	8.0	$\mu\text{A}$
$\Delta I_{CC}$	Additional supply current	Per input pin; $V_I=V_{CC}-2.1\text{V};$ Other inputs	Per input pin; Dn inputs	-	35	126	$\mu\text{A}$
			Per input pin; LE input	-	65	234	$\mu\text{A}$

		at $V_{CC}$ or GND; $V_{CC}=4.5V$ to $5.5V$ ; $I_o=0A$	Per input pin; OE input	-	125	450	$\mu A$
$C_i$	Input capacitance		-	-	3.5	-	pF

### 7.4.2 DC Characteristics 2

$T_{amb} = -40^{\circ}C$  to  $+85^{\circ}C$ , voltages are referenced to GND (ground=0V), unless otherwise specified.

SYMBOL	PARAMETER	CONDITIONS	MIN.	TYP.	MAX.	UNIT	
<b>CJ74HC573</b>							
$V_{IH}$	HIGH-level input voltage	$V_{CC}=2.0V$	1.5	-	-	V	
		$V_{CC}=4.5V$	3.15	-	-	V	
		$V_{CC}=6.0V$	4.2	-	-	V	
$V_{IL}$	LOW-level input voltage	$V_{CC}=2.0V$	-	-	0.5	V	
		$V_{CC}=4.5V$	-	-	1.35	V	
		$V_{CC}=6.0V$	-	-	1.8	V	
$V_{OH}$	HIGH-level output voltage	$V_i=V_{IH}$ or $V_{IL}$	$I_o=-20\mu A$ ; $V_{CC}=2.0V$	1.9	-	-	V
			$I_o=-20\mu A$ ; $V_{CC}=4.5V$	4.4	-	-	V
			$I_o=-20\mu A$ ; $V_{CC}=6.0V$	5.9	-	-	V
			$I_o=-6.0mA$ ; $V_{CC}=4.5V$	3.84	-	-	V
			$I_o=-7.8mA$ ; $V_{CC}=6.0V$	5.34	-	-	V
$V_{OL}$	LOW-level output voltage	$V_i=V_{IH}$ or $V_{IL}$	$I_o=20\mu A$ ; $V_{CC}=2.0V$	-	-	0.1	V
			$I_o=20\mu A$ ; $V_{CC}=4.5V$	-	-	0.1	V
			$I_o=20\mu A$ ; $V_{CC}=6.0V$	-	-	0.1	V
			$I_o=6.0mA$ ; $V_{CC}=4.5V$	-	-	0.33	V
			$I_o=7.8mA$ ; $V_{CC}=6.0V$	-	-	0.33	V
$I_i$	Input leakage current	$V_i=V_{CC}$ or GND; $V_{CC}=6.0V$	-	-	$\pm 1.0$	$\mu A$	
$I_{oz}$	OFF-state output current	$V_i=V_{IH}$ or $V_{IL}$ ; $V_{CC}=6.0V$ ; $V_o=V_{CC}$ or GND	-	-	$\pm 5.0$	$\mu A$	
$I_{CC}$	Supply current	$V_i=V_{CC}$ or GND; $I_o=0A$ ; $V_{CC}=6.0V$	-	-	80	$\mu A$	
<b>CJ74HCT573</b>							
$V_{IH}$	HIGH-level input voltage	$V_{CC}=4.5V$ to $5.5V$	2.0	-	-	V	
$V_{IL}$	LOW-level input voltage	$V_{CC}=4.5V$ to $5.5V$	-	-	0.8	V	
$V_{OH}$	HIGH-level output voltage	$V_i=V_{IH}$ or $V_{IL}$ ; $V_{CC}=4.5V$	$I_o=-20\mu A$	4.4	-	-	V
			$I_o=-6.0mA$	3.84	-	-	V
$V_{OL}$	LOW-level output voltage	$V_i=V_{IH}$ or $V_{IL}$ ; $V_{CC}=4.5V$	$I_o=20\mu A$	-	-	0.1	V
			$I_o=6.0mA$	-	-	0.33	V
$I_i$	Input leakage current	$V_i=V_{CC}$ or GND; $V_{CC}=5.5V$	-	-	$\pm 1.0$	$\mu A$	
$I_{oz}$	OFF-state output current	$V_i=V_{IH}$ or $V_{IL}$ ; $V_{CC}=5.5V$ ; $V_o=V_{CC}$ or GND	-	-	$\pm 5.0$	$\mu A$	
$I_{CC}$	Supply current	$V_i=V_{CC}$ or GND; $I_o=0A$ ; $V_{CC}=5.5V$	-	-	80	$\mu A$	

$\Delta I_{CC}$	Additional supply current	Per input pin; $V_I=V_{CC}-2.1V$ ; Other inputs at $V_{CC}$ or GND; $V_{CC}=4.5V$ to $5.5V$ ; $I_O=0A$	Per input pin; Dn inputs	-	-	158	$\mu A$
			Per input pin; LE input	-	-	293	$\mu A$
			Per input pin; OE input	-	-	563	$\mu A$

**7.4.3 DC Characteristics 3**

$T_{amb} = -40^{\circ}C$  to  $+125^{\circ}C$ , voltages are referenced to GND (ground=0V), unless otherwise specified.

SYMBOL	PARAMETER	CONDITIONS	MIN.	TYP.	MAX.	UNIT	
<b>CJ74HC573</b>							
$V_{IH}$	HIGH-level input voltage	$V_{CC}=2.0V$	1.5	-	-	V	
		$V_{CC}=4.5V$	3.15	-	-	V	
		$V_{CC}=6.0V$	4.2	-	-	V	
$V_{IL}$	LOW-level input voltage	$V_{CC}=2.0V$	-	-	0.5	V	
		$V_{CC}=4.5V$	-	-	1.35	V	
		$V_{CC}=6.0V$	-	-	1.8	V	
$V_{OH}$	HIGH-level output voltage	$V_I=V_{IH}$ or $V_{IL}$	$I_O=-20\mu A$ ; $V_{CC}=2.0V$	1.9	-	-	V
			$I_O=-20\mu A$ ; $V_{CC}=4.5V$	4.4	-	-	V
			$I_O=-20\mu A$ ; $V_{CC}=6.0V$	5.9	-	-	V
			$I_O=-6.0mA$ ; $V_{CC}=4.5V$	3.7	-	-	V
			$I_O=-7.8mA$ ; $V_{CC}=6.0V$	5.2	-	-	V
$V_{OL}$	LOW-level output voltage	$V_I=V_{IH}$ or $V_{IL}$	$I_O=20\mu A$ ; $V_{CC}=2.0V$	-	-	0.1	V
			$I_O=20\mu A$ ; $V_{CC}=4.5V$	-	-	0.1	V
			$I_O=20\mu A$ ; $V_{CC}=6.0V$	-	-	0.1	V
			$I_O=6.0mA$ ; $V_{CC}=4.5V$	-	-	0.4	V
			$I_O=7.8mA$ ; $V_{CC}=6.0V$	-	-	0.4	V
$I_I$	Input leakage current	$V_I=V_{CC}$ or GND; $V_{CC}=6.0V$	-	-	$\pm 1.0$	$\mu A$	
$I_{OZ}$	OFF-state output current	$V_I=V_{IH}$ or $V_{IL}$ ; $V_{CC}=6.0V$ ; $V_O=V_{CC}$ or GND	-	-	$\pm 10$	$\mu A$	
$I_{CC}$	Supply current	$V_I=V_{CC}$ or GND; $I_O=0A$ ; $V_{CC}=6.0V$	-	-	160	$\mu A$	
<b>CJ74HCT573</b>							
$V_{IH}$	HIGH-level input voltage	$V_{CC}=4.5V$ to $5.5V$	2.0	-	-	V	
$V_{IL}$	LOW-level input voltage	$V_{CC}=4.5V$ to $5.5V$	-	-	0.8	V	
$V_{OH}$	HIGH-level output voltage	$V_I=V_{IH}$ or $V_{IL}$ ; $V_{CC}=4.5V$	$I_O=-20\mu A$	4.4	-	-	V
			$I_O=-6.0mA$	3.7	-	-	V
$V_{OL}$	LOW-level output voltage	$V_I=V_{IH}$ or $V_{IL}$ ; $V_{CC}=4.5V$	$I_O=20\mu A$	-	-	0.1	V
			$I_O=6.0mA$	-	-	0.4	V
$I_I$	Input leakage current	$V_I=V_{CC}$ or GND; $V_{CC}=5.5V$	-	-	$\pm 1.0$	$\mu A$	
$I_{OZ}$	OFF-state output current	$V_I=V_{IH}$ or $V_{IL}$ ; $V_{CC}=5.5V$ ; $V_O=V_{CC}$ or GND	-	-	$\pm 10$	$\mu A$	
$I_{CC}$	Supply current	$V_I=V_{CC}$ or GND; $I_O=0A$ ; $V_{CC}=5.5V$	-	-	160	$\mu A$	

$\Delta I_{CC}$	Additional supply current	Per input pin; $V_I=V_{CC}-2.1V$ ; Other inputs at $V_{CC}$ or GND; $V_{CC}=4.5V$ to $5.5V$ ; $I_O=0A$	Per input pin; Dn inputs	-	-	172	$\mu A$
			Per input pin; LE input	-	-	319	$\mu A$
			Per input pin; OE input	-	-	613	$\mu A$

**7.4.4 AC Characteristics 1**
 $T_{amb}=25^{\circ}C$ , voltages are referenced to GND (ground=0V), unless otherwise specified.

SYMBOL	PARAMETER	CONDITIONS	MIN.	TYP.	MAX.	UNIT	
<b>CJ74HC573</b>							
$t_{pd}$	Propagation delay	Dn to Qn; See Figure 8-6	$V_{CC}=2.0V$	-	47	150	ns
			$V_{CC}=4.5V$	-	17	30	ns
			$V_{CC}=5.0V$ ; $C_L=15pF$	-	14	-	ns
			$V_{CC}=6.0V$	-	14	26	ns
		LE to Qn; See Figure 8-7	$V_{CC}=2.0V$	-	50	150	ns
			$V_{CC}=4.5V$	-	18	30	ns
			$V_{CC}=5.0V$ ; $C_L=15pF$	-	15	-	ns
			$V_{CC}=6.0V$	-	14	26	ns
$t_{en}$	OE to Qn enable time	See Figure 8-8	$V_{CC}=2.0V$	-	44	140	ns
			$V_{CC}=4.5V$	-	16	28	ns
			$V_{CC}=6.0V$	-	13	24	ns
$t_{dis}$	OE to Qn disable time	See Figure 8-8	$V_{CC}=2.0V$	-	55	150	ns
			$V_{CC}=4.5V$	-	20	30	ns
			$V_{CC}=6.0V$	-	16	26	ns
$t_t$	Transition time	Qn; See Figure 8-6	$V_{CC}=2.0V$	-	14	60	ns
			$V_{CC}=4.5V$	-	5	12	ns
			$V_{CC}=6.0V$	-	4	10	ns
$t_w$	Pulse width	LE HIGH; See Figure 8-7	$V_{CC}=2.0V$	80	-	-	ns
			$V_{CC}=4.5V$	16	-	-	ns
			$V_{CC}=6.0V$	14	-	-	ns
$t_{su}$	Set-up time	Dn to LE; See Figure 8-9	$V_{CC}=2.0V$	50	-	-	ns
			$V_{CC}=4.5V$	10	-	-	ns
			$V_{CC}=6.0V$	9	-	-	ns
$t_h$	Hold time	Dn to LE; See Figure 8-9	$V_{CC}=2.0V$	5	-	-	ns
			$V_{CC}=4.5V$	5	-	-	ns
			$V_{CC}=6.0V$	5	-	-	ns
$C_{PD}$	Power dissipation capacitance	$C_L=50pF$ , $f=1MHz$ ; $V_I=GND$ to $V_{CC}$	-	26	-	pF	
<b>CJ74HCT573</b>							
$t_{pd}$	Propagation delay	Dn to Qn;	$V_{CC}=4.5V$	-	20	35	ns

		See Figure 8-6	V <sub>CC</sub> =5.0V; C <sub>L</sub> =15pF	-	17	-	ns
		LE to Qn; See Figure 8-7	V <sub>CC</sub> =4.5V	-	18	35	ns
			V <sub>CC</sub> =5.0V; C <sub>L</sub> =15pF	-	15	-	ns
t <sub>en</sub>	OE to Qn enable time	V <sub>CC</sub> =4.5V; See Figure 8-8		-	17	30	ns
t <sub>dis</sub>	OE to Qn disable time	V <sub>CC</sub> =4.5V; See Figure 8-8		-	18	30	ns
t <sub>t</sub>	Transition time	Qn; V <sub>CC</sub> =4.5V; See Figure 8-6		-	5	12	ns
t <sub>w</sub>	Pulse width	LE HIGH; V <sub>CC</sub> =4.5V; See Figure 8-7		16	-	-	ns
t <sub>su</sub>	Dn to LE set-up time	V <sub>CC</sub> =4.5V; See Figure 8-9		13	-	-	ns
t <sub>h</sub>	Dn to LE hold time	V <sub>CC</sub> =4.5V; See Figure 8-9		9	-	-	ns
C <sub>PD</sub>	Power dissipation capacitance	C <sub>L</sub> =50pF, f=1MHz; V <sub>I</sub> =GND to V <sub>CC</sub> -1.5V		-	26	-	pF

**Note:**

- (1) t<sub>pd</sub> is the same as t<sub>PLH</sub> and t<sub>PHL</sub>.
- (2) t<sub>en</sub> is the same as t<sub>PZL</sub> and t<sub>PZH</sub>.
- (3) t<sub>dis</sub> is the same as t<sub>PLZ</sub> and t<sub>PHZ</sub>.
- (4) t<sub>t</sub> is the same as t<sub>THL</sub> and t<sub>TLH</sub>.
- (5) C<sub>PD</sub> is used to determine the dynamic power dissipation (P<sub>D</sub> in uW).

$P_D = C_{PD} \times V_{CC}^2 \times f_i \times N + \sum (C_L \times V_{CC}^2 \times f_o)$  where:

f<sub>i</sub>=input frequency in MHz;

f<sub>o</sub>=output frequency in MHz;

C<sub>L</sub>=output load capacitance in pF;

V<sub>CC</sub>=supply voltage in V;

N=number of inputs switching;

$\sum (C_L \times V_{CC}^2 \times f_o)$ =sum of outputs.

**7.4.5 AC Characteristics 2**

T<sub>amb</sub>=-40°C to +85°C, voltages are referenced to GND (ground=0V), unless otherwise specified.

SYMBOL	PARAMETER	CONDITIONS	MIN.	TYP.	MAX.	UNIT	
<b>CJ74HC573</b>							
t <sub>pd</sub>	Propagation delay	Dn to Qn; See Figure 8-6	V <sub>CC</sub> =2.0V	-	-	190	ns
			V <sub>CC</sub> =4.5V	-	-	38	ns
			V <sub>CC</sub> =6.0V	-	-	33	ns
		LE to Qn; See Figure 8-7	V <sub>CC</sub> =2.0V	-	-	190	ns
			V <sub>CC</sub> =4.5V	-	-	38	ns
			V <sub>CC</sub> =6.0V	-	-	33	ns
t <sub>en</sub>	OE to Qn enable time	See Figure 8-8	V <sub>CC</sub> =2.0V	-	-	175	ns
			V <sub>CC</sub> =4.5V	-	-	35	ns
			V <sub>CC</sub> =6.0V	-	-	30	ns
t <sub>dis</sub>	OE to Qn disable time	See Figure 8-8	V <sub>CC</sub> =2.0V	-	-	190	ns
			V <sub>CC</sub> =4.5V	-	-	38	ns
			V <sub>CC</sub> =6.0V	-	-	33	ns

$t_t$	Transition time	Qn; See Figure 8-6	$V_{CC}=2.0V$	-	-	75	ns
			$V_{CC}=4.5V$	-	-	15	ns
			$V_{CC}=6.0V$	-	-	13	ns
$t_w$	Pulse width	LE HIGH; See Figure 8-7	$V_{CC}=2.0V$	100	-	-	ns
			$V_{CC}=4.5V$	20	-	-	ns
			$V_{CC}=6.0V$	17	-	-	ns
$t_{su}$	Set-up time	Dn to LE; See Figure 8-9	$V_{CC}=2.0V$	65	-	-	ns
			$V_{CC}=4.5V$	13	-	-	ns
			$V_{CC}=6.0V$	11	-	-	ns
$t_h$	Hold time	Dn to LE; See Figure 8-9	$V_{CC}=2.0V$	5	-	-	ns
			$V_{CC}=4.5V$	5	-	-	ns
			$V_{CC}=6.0V$	5	-	-	ns

**CJ74HCT573**

$t_{pd}$	Propagation delay	Dn to Qn; See Figure 8-6	$V_{CC}=4.5V$	-	-	44	ns
		LE to Qn; See Figure 8-7	$V_{CC}=4.5V$	-	-	44	ns
$t_{en}$	$\overline{OE}$ to Qn enable time	$V_{CC}=4.5V$ ; See Figure 8-8		-	-	38	ns
$t_{dis}$	$\overline{OE}$ to Qn disable time	$V_{CC}=4.5V$ ; See Figure 8-8		-	-	38	ns
$t_t$	Transition time	Qn; $V_{CC}=4.5V$ ; See Figure 8-6		-	-	15	ns
$t_w$	Pulse width	LE HIGH; $V_{CC}=4.5V$ ; See Figure 8-7		20	-	-	ns
$t_{su}$	Dn to LE set-up time	$V_{CC}=4.5V$ ; See Figure 8-9		16	-	-	ns
$t_h$	Dn to LE hold time	$V_{CC}=4.5V$ ; See Figure 8-9		11	-	-	ns

**Note:**

- (1)  $t_{pd}$  is the same as  $t_{PLH}$  and  $t_{PHL}$ .
- (2)  $t_{en}$  is the same as  $t_{PZL}$  and  $t_{PZH}$ .
- (3)  $t_{dis}$  is the same as  $t_{PLZ}$  and  $t_{PHZ}$ .
- (4)  $t_t$  is the same as  $t_{THL}$  and  $t_{TLH}$ .

**7.4.6 AC Characteristics 3**

$T_{amb}=-40^{\circ}C$  to  $+125^{\circ}C$ , voltages are referenced to GND (ground=0V), unless otherwise specified.

SYMBOL	PARAMETER	CONDITIONS	MIN.	TYP.	MAX.	UNIT	
<b>CJ74HC573</b>							
$t_{pd}$	Propagation delay	Dn to Qn; See Figure 8-6	$V_{CC}=2.0V$	-	-	225	ns
			$V_{CC}=4.5V$	-	-	45	ns
			$V_{CC}=6.0V$	-	-	38	ns
		LE to Qn; See Figure 8-7	$V_{CC}=2.0V$	-	-	225	ns
			$V_{CC}=4.5V$	-	-	45	ns
			$V_{CC}=6.0V$	-	-	38	ns
$t_{en}$	$\overline{OE}$ to Qn enable	See Figure 8-8	$V_{CC}=2.0V$	-	-	210	ns

	time		$V_{CC}=4.5V$	-	-	42	ns
			$V_{CC}=6.0V$	-	-	36	ns
$t_{dis}$	$\overline{OE}$ to Qn disable time	See Figure 8-8	$V_{CC}=2.0V$	-	-	225	ns
			$V_{CC}=4.5V$	-	-	45	ns
			$V_{CC}=6.0V$	-	-	38	ns
$t_t$	Transition time	Qn; See Figure 8-6	$V_{CC}=2.0V$	-	-	90	ns
			$V_{CC}=4.5V$	-	-	18	ns
			$V_{CC}=6.0V$	-	-	15	ns
$t_w$	Pulse width	LE HIGH; See Figure 8-7	$V_{CC}=2.0V$	120	-	-	ns
			$V_{CC}=4.5V$	24	-	-	ns
			$V_{CC}=6.0V$	20	-	-	ns
$t_{su}$	Set-up time	Dn to LE; See Figure 8-9	$V_{CC}=2.0V$	75	-	-	ns
			$V_{CC}=4.5V$	15	-	-	ns
			$V_{CC}=6.0V$	13	-	-	ns
$t_h$	Hold time	Dn to LE; See Figure 8-9	$V_{CC}=2.0V$	5	-	-	ns
			$V_{CC}=4.5V$	5	-	-	ns
			$V_{CC}=6.0V$	5	-	-	ns

**CJ74HCT573**

$t_{pd}$	Propagation delay	Dn to Qn; See Figure 8-6	$V_{CC}=4.5V$	-	-	53	ns
		LE to Qn; See Figure 8-7	$V_{CC}=4.5V$	-	-	53	ns
$t_{en}$	$\overline{OE}$ to Qn enable time	$V_{CC}=4.5V$ ; See Figure 8-8		-	-	45	ns
$t_{dis}$	$\overline{OE}$ to Qn disable time	$V_{CC}=4.5V$ ; See Figure 8-8		-	-	45	ns
$t_t$	Transition time	Qn; $V_{CC}=4.5V$ ; See Figure 8-6		-	-	18	ns
$t_w$	Pulse width	LE HIGH; $V_{CC}=4.5V$ ; See Figure 8-7		24	-	-	ns
$t_{su}$	Dn to LE set-up time	$V_{CC}=4.5V$ ; See Figure 8-9		20	-	-	ns
$t_h$	Dn to LE hold time	$V_{CC}=4.5V$ ; See Figure 8-9		15	-	-	ns

**Note:**

- (1)  $t_{pd}$  is the same as  $t_{PLH}$  and  $t_{PHL}$ .
- (2)  $t_{en}$  is the same as  $t_{PZL}$  and  $t_{PZH}$ .
- (3)  $t_{dis}$  is the same as  $t_{PLZ}$  and  $t_{PHZ}$ .
- (4)  $t_t$  is the same as  $t_{THL}$  and  $t_{TLH}$ .

## 8 Detailed Description

### 8.1 Overview

The CJ74HC/HCT573 is an 8-bit D-type transparent latch with 3-state outputs. The device features latch enable (LE) and output enable ( $\overline{OE}$ ) inputs. When LE is HIGH, data at the inputs enter the latches. In this condition the latches are transparent, a latch output will change each time its corresponding D-input changes. When LE is LOW the latches store the information that was present at the inputs a set-up time preceding the HIGH-to-LOW transition of LE. A HIGH on  $\overline{OE}$  causes the outputs to assume a high-impedance OFF-state. Operation of the  $\overline{OE}$  input does not affect the state of the latches. Inputs include clamp diodes. This enables the use of current limiting resistors to interface inputs to voltages in excess of  $V_{CC}$ .

### 8.2 Functional Block Diagram

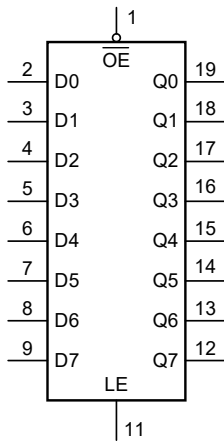


Figure 8-1 Logic symbol

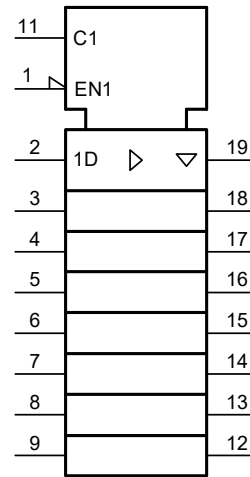


Figure 8-2 IEC logic symbol

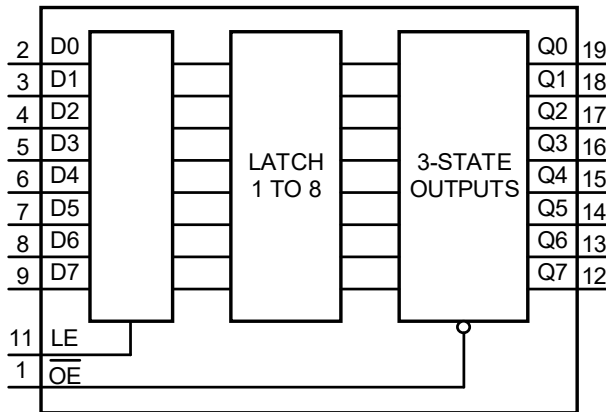


Figure 8-3 Functional diagram

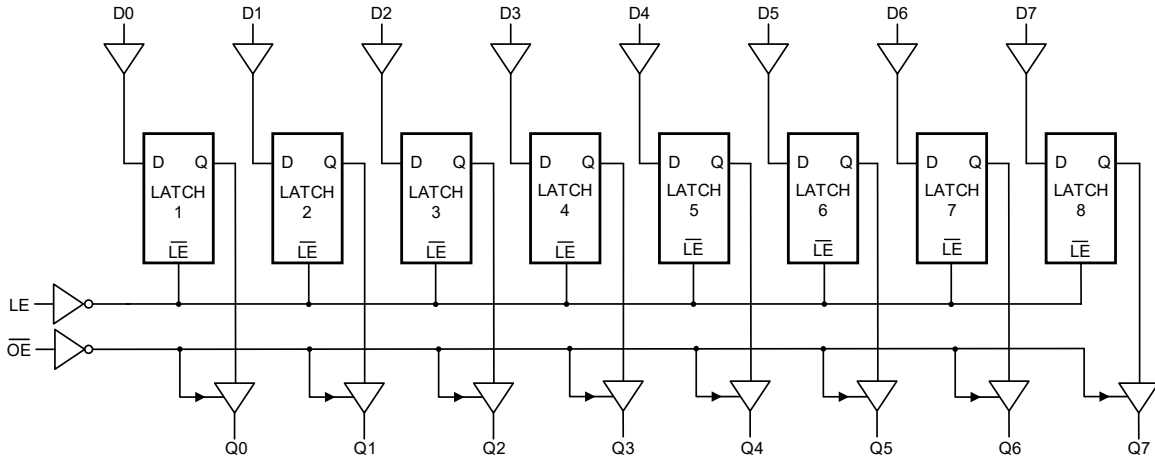


Figure 8-4 Logic diagram

8.3 Function Table

OPERATING MODE	CONTROL		INPUT	INTERNAL LATCHES	OUTPUT
	OE	LE	Dn		Qn
Enable and read register (transparent mode)	L	H	L	L	L
			H	H	H
Latch and read register	L	L	l	L	L
			h	H	H
Latch register and disable outputs	H	L	l	L	Z
			h	H	Z

Note:

- (1) H=HIGH voltage level; L=LOW voltage level; Z=high-impedance OFF-state;
- (2) h = HIGH voltage level one set-up time prior to the HIGH-to-LOW LE transition;
- (3) l = LOW voltage level one set-up time prior to the HIGH-to-LOW LE transition.

8.4 Testing Circuit

8.4.1 AC Testing Circuit

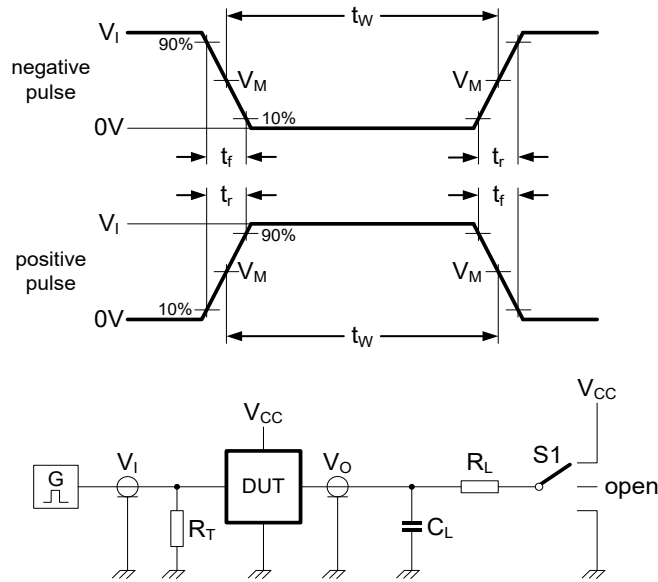


Figure 8-5 Test circuit for measuring switching times

Definitions for test circuit:

$R_L$ =Load resistance.

$C_L$ =Load capacitance including jig and probe capacitance.

$R_T$ =Termination resistance should be equal to the output impedance  $Z_o$  of the pulse generator.

$S1$ =Test selection switch.

8.4.2 AC Testing Waveforms

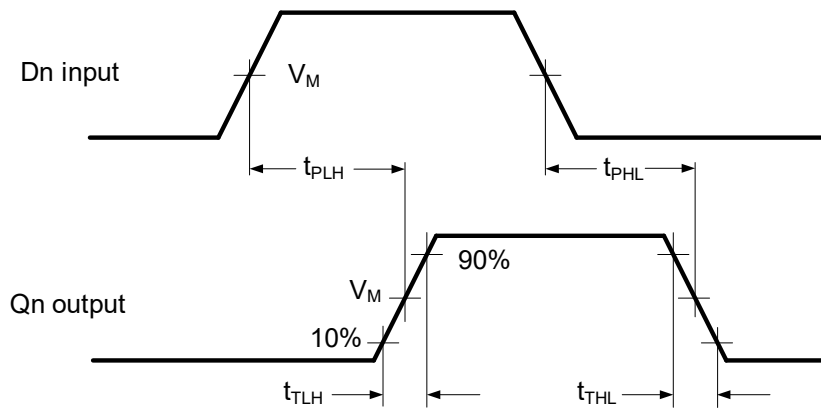


Figure 8-6 Propagation delay data input (Dn) to output (Qn) and output transition time

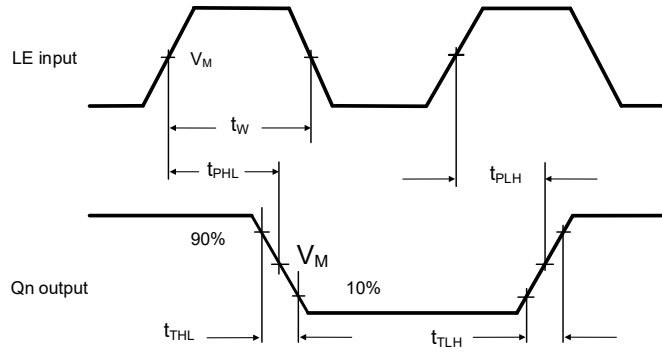


Figure 8-7 Pulse width latch enable input (LE), propagation delay latch enable input (LE) to output (Qn) and output transition time

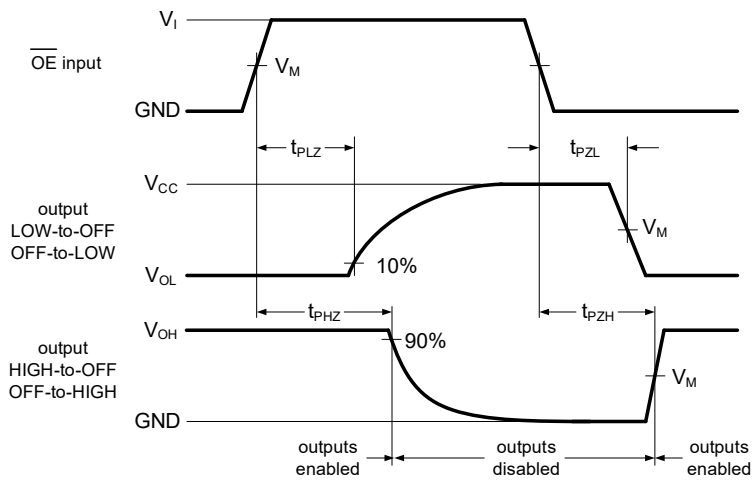


Figure 8-8 Enable and disable times

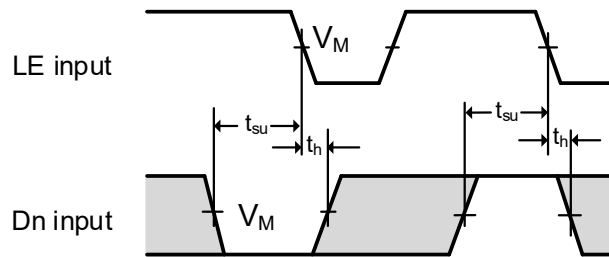


Figure 8-9 Set-up and hold times for data input (Dn) to latch input (LE)

**8.4.3 Measurement Points**

TYPE	INPUT	OUTPUT
	$V_M$	$V_M$
CJ74HC573	$0.5 \times V_{CC}$	$0.5 \times V_{CC}$
CJ74HCT573	1.3V	1.3V

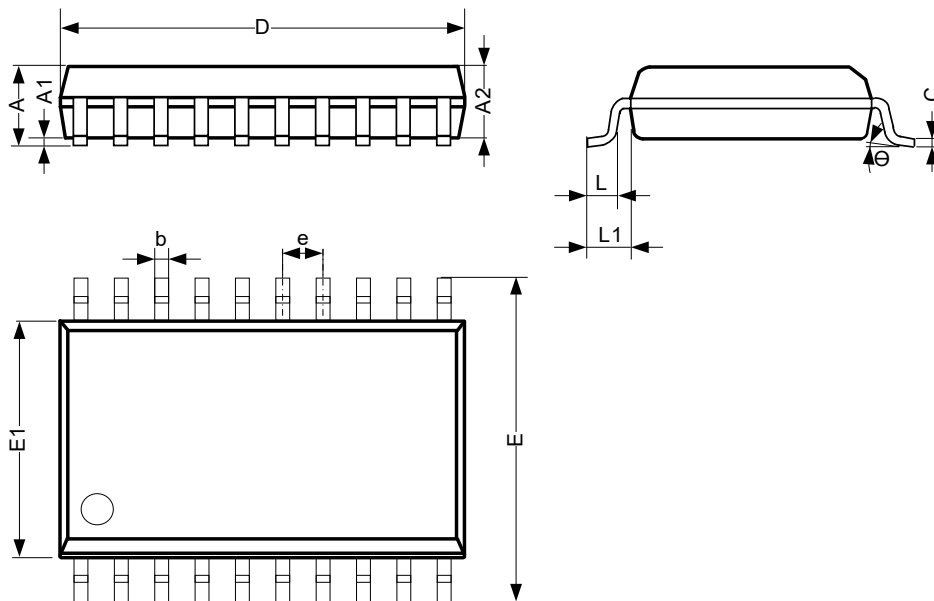
**8.4.4 Test Data**

TYPE	INPUT		LOAD		S1 POSITION		
	$V_I$	$t_r, t_f$	$C_L$	$R_L$	$t_{PHL}, t_{PLH}$	$t_{PZH}, t_{PHZ}$	$t_{PZL}, t_{PLZ}$
CJ74HC573	$V_{CC}$	6ns	15pF, 50pF	1k $\Omega$	Open	GND	$V_{CC}$
CJ74HCT573	3V	6ns	15pF, 50pF	1k $\Omega$	Open	GND	$V_{CC}$

9 Mechanical Information

9.1 SOP20 Mechanical Information

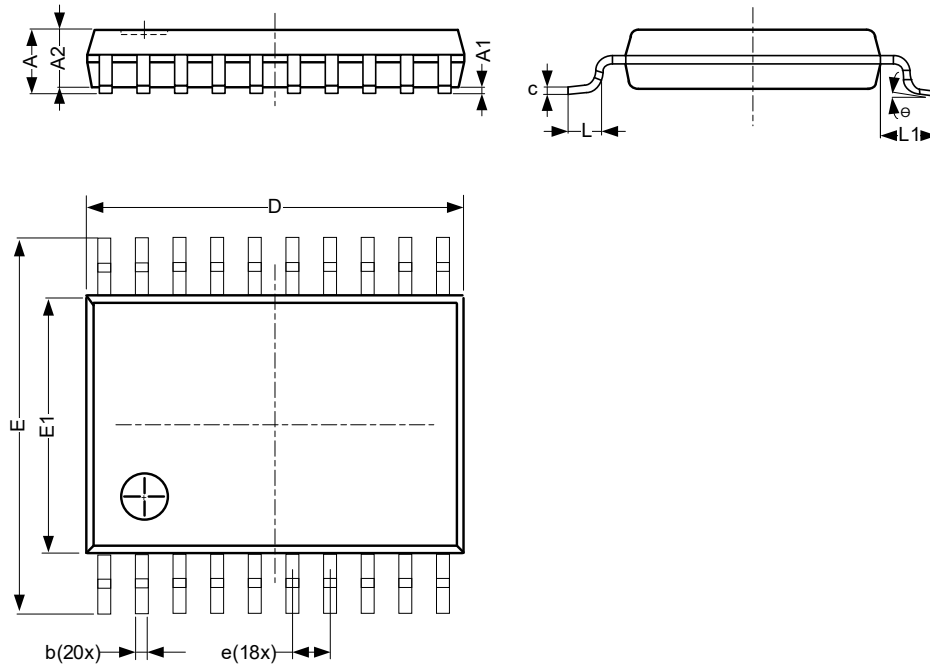
9.1.1 SOP20 Outline Dimensions



SYMBOL	Dimensions In Millimeters		
	Min.	Typ.	Max.
A	2.47	-	2.65
A1	0.05	-	0.30
A2	2.20	-	2.44
b	0.35	-	0.50
c	0.15	-	0.30
D	12.54	-	12.94
E	10.00	-	10.60
E1	7.30	-	7.70
e	1.27 BSC		
L	0.40	-	1.05
L1	1.30	-	1.50
Θ	0°	-	8°
Unit: mm			

9.2 TSSOP20 Mechanical Information

9.2.1 TSSOP20 Outline Dimensions



SYMBOL	Dimensions In Millimeters		
	Min.	Typ.	Max.
A	-	-	1.20
A1	0.05	-	0.15
A2	0.80	-	1.05
b	0.19	-	0.30
c	0.09	-	0.20
D	6.40	-	6.60
E	6.20	-	6.60
E1	4.30	-	4.50
e	0.65 BSC		
L	0.45	-	0.75
L1	-	1.00	-
Θ	0°	-	8°
Unit: mm			

## 10 Notes and Revision History

### 10.1 Associated Product Family and Others

To view other products of the same type or IC products of other types, click the official website of JSCJ -- <https://www.jscj-elec.com> for more details.

### 10.2 Notes

#### Electrostatic Discharge Caution



This IC may be damaged by ESD. Relevant personnel shall comply with correct installation and use specifications to avoid ESD damage to the IC. If appropriate measures are not taken to prevent ESD damage, the hazards caused by ESD include but are not limited to degradation of integrated circuit performance or complete damage of integrated circuit. For some precision integrated circuits, a very small parameter change may cause the whole device to be inconsistent with its published specifications.

# DISCLAIMER

## IMPORTANT NOTICE, PLEASE READ CAREFULLY

The information in this data sheet is intended to describe the operation and characteristics of our products. JSCJ has the right to make any modification, enhancement, improvement, correction or other changes to any content in this data sheet, including but not limited to specification parameters, circuit design and application information, without prior notice.

Any person who purchases or uses JSCJ products for design shall: 1. Select products suitable for circuit application and design; 2. Design, verify and test the rationality of circuit design; 3. Procedures to ensure that the design complies with relevant laws and regulations and the requirements of such laws and regulations. JSCJ makes no warranty or representation as to the accuracy or completeness of the information contained in this data sheet and assumes no responsibility for the application or use of any of the products described in this data sheet.

Without the written consent of JSCJ, this product shall not be used in occasions requiring high quality or high reliability, including but not limited to the following occasions: medical equipment, military facilities and aerospace. JSCJ shall not be responsible for casualties or property losses caused by abnormal use or application of this product.

Official Website: [www.jscj-elec.com](http://www.jscj-elec.com)

Copyright © JIANGSU CHANGJING ELECTRONICS TECHNOLOGY CO., LTD