



TO-220F Plastic-Encapsulate MOSFETS

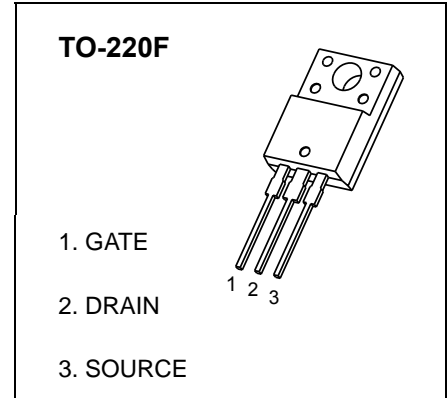
CJPF05N65

N-Channel Power MOSFET

$V_{(BR)DSS}$	$R_{DS(on)TYP}$	I_D
650V	2.2Ω@10V	5A

GENERAL DESCRIPTION

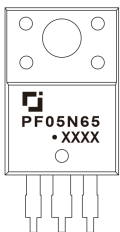
This advanced high voltage MOSFET is designed to stand high energy in the avalanche mode and switch efficiently. This new high energy device also offers a drain-to-source diode fast recovery time. Designed for high voltage, high speed switching applications such as power supplies, converters, power motor controls and bridge circuits.



FEATURE

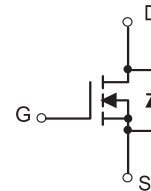
- High Current Rating
- Lower $R_{DS(on)}$
- Lower Capacitance
- Lower Total Gate Charge
- Tighter V_{SD} Specifications
- Avalanche Energy Specified
- Fast Switching Capability

MARKING



PF05N65 = Device code
 Solid dot = Green molding compound device,
 if none, the normal device
 XXXX=Code

EQUIVALENT CIRCUIT



Maximum ratings ($T_a=25^\circ\text{C}$ unless otherwise noted)

Parameter	Symbol	Value	Unit
Drain-Source Voltage	V_{DS}	650	V
Gate-Source Voltage	V_{GS}	±30	
Continuous Drain Current	I_D	5	A
Pulsed Drain Current	I_{DM}	20	
Single Pulsed Avalanche Energy (note1)	E_{AS}	210	mJ
Thermal Resistance from Junction to Ambient	$R_{\theta JA}$	62.5	$^\circ\text{C}/\text{W}$
Operating and Storage Temperature Range	T_J, T_{STG}	-55 ~+150	$^\circ\text{C}$
Maximum Lead Temperature for Soldering Purposes , Duration for 5 Seconds	T_L	260	

MOSFET ELECTRICAL CHARACTERISTICS

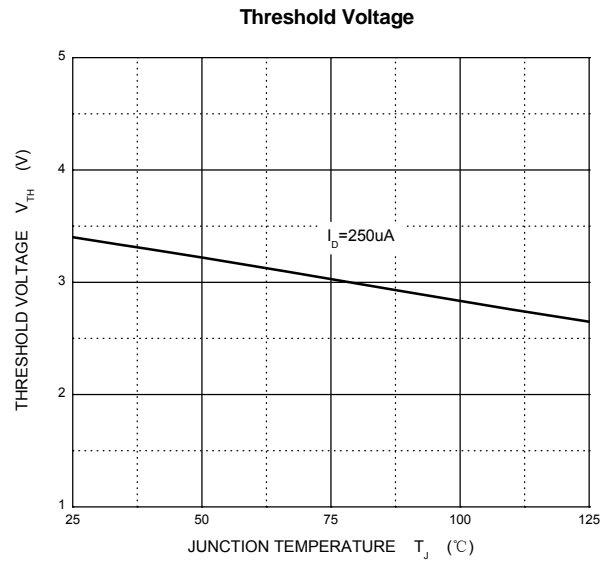
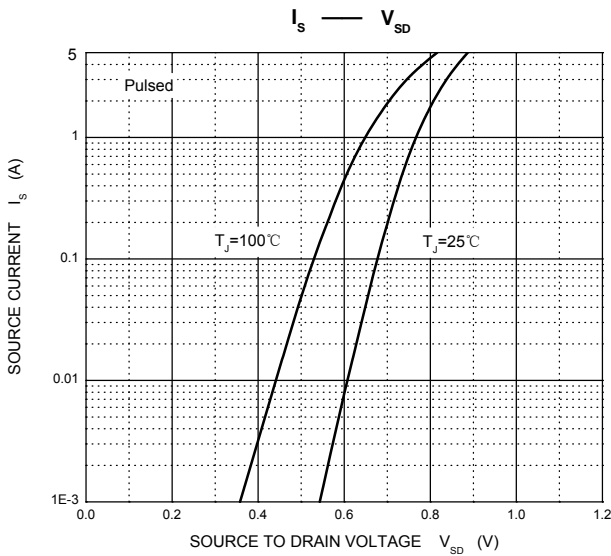
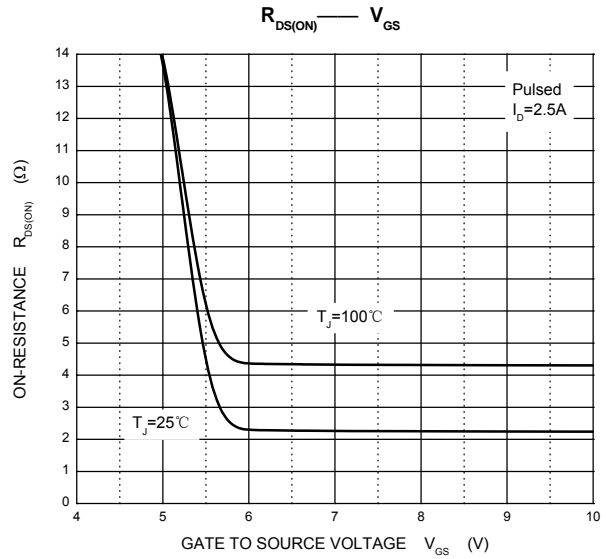
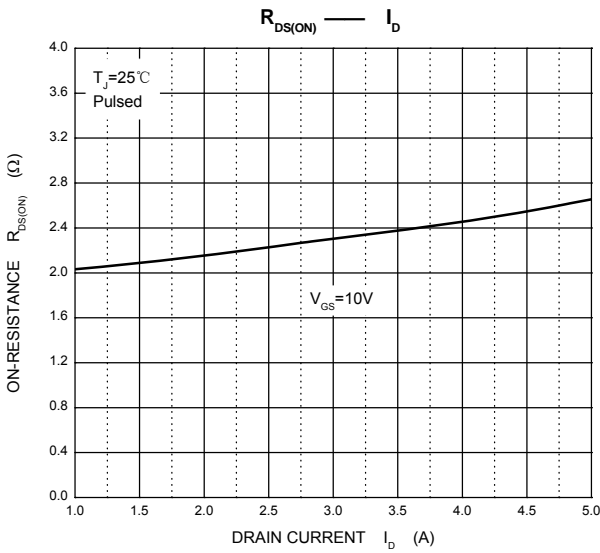
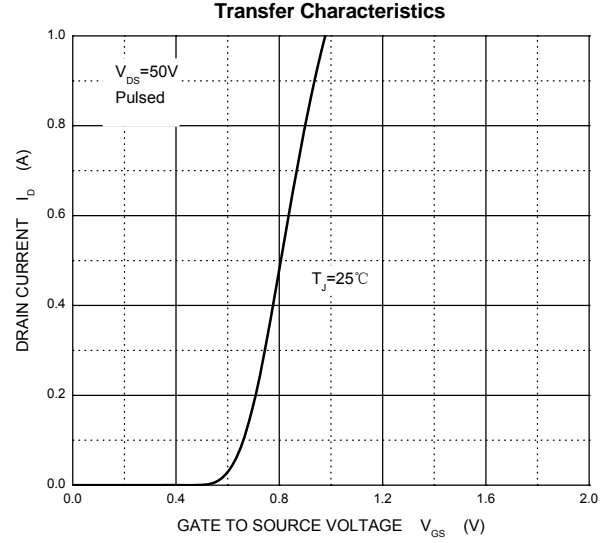
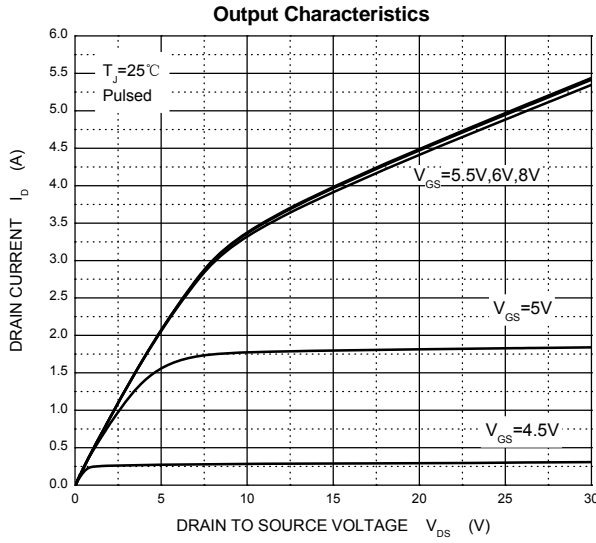
$T_a=25\text{ }^\circ\text{C}$ unless otherwise specified

Parameter	Symbol	Test Condition	Min	Typ	Max	Unit
Off characteristics						
Drain-source breakdown voltage	$V_{(BR)DSS}$	$V_{GS} = 0V, I_D = 250\mu A$	650			V
Drain-source diode forward voltage	V_{SD}	$V_{GS} = 0V, I_S = 5A$			1.4	
Zero gate voltage drain current	I_{DSS}	$V_{DS} = 650V, V_{GS} = 0V$			1	μA
Gate-body leakage current	I_{GSS}	$V_{DS} = 0V, V_{GS} = \pm 30V$			± 100	nA
On characteristics (note 2)						
Gate-threshold voltage	$V_{GS(th)}$	$V_{DS} = V_{GS}, I_D = 250\mu A$	2.0	3.5	4.0	V
Static drain-source on-resistance	$R_{DS(on)}$	$V_{GS} = 10V, I_D = 2.5A$		2.2	2.4	Ω
Forward transconductance	g_{fs}	$V_{DS} = 50V, I_D = 2.5A$		4		S
Dynamic characteristics (note 3)						
Input capacitance	C_{iss}	$V_{DS} = 25V, V_{GS} = 0V, f = 1MHz$			670	pF
Output capacitance	C_{oss}				72	
Reverse transfer capacitance	C_{rss}				8.5	
Switching characteristics (note 3)						
Total gate charge	Q_g	$V_{DS} = 520V, V_{GS} = 10V, I_D = 5A$		15	19	nC
Gate-source charge	Q_{gs}			2.5		
Gate-drain charge	Q_{gd}			6.6		
Turn-on delay time	$t_{d(on)}$	$V_{DD} = 325V, R_G = 25\Omega, I_D = 5A$			30	ns
Turn-on rise time	t_r				90	
Turn-off delay time	$t_{d(off)}$				85	
Turn-off fall time	t_f				100	

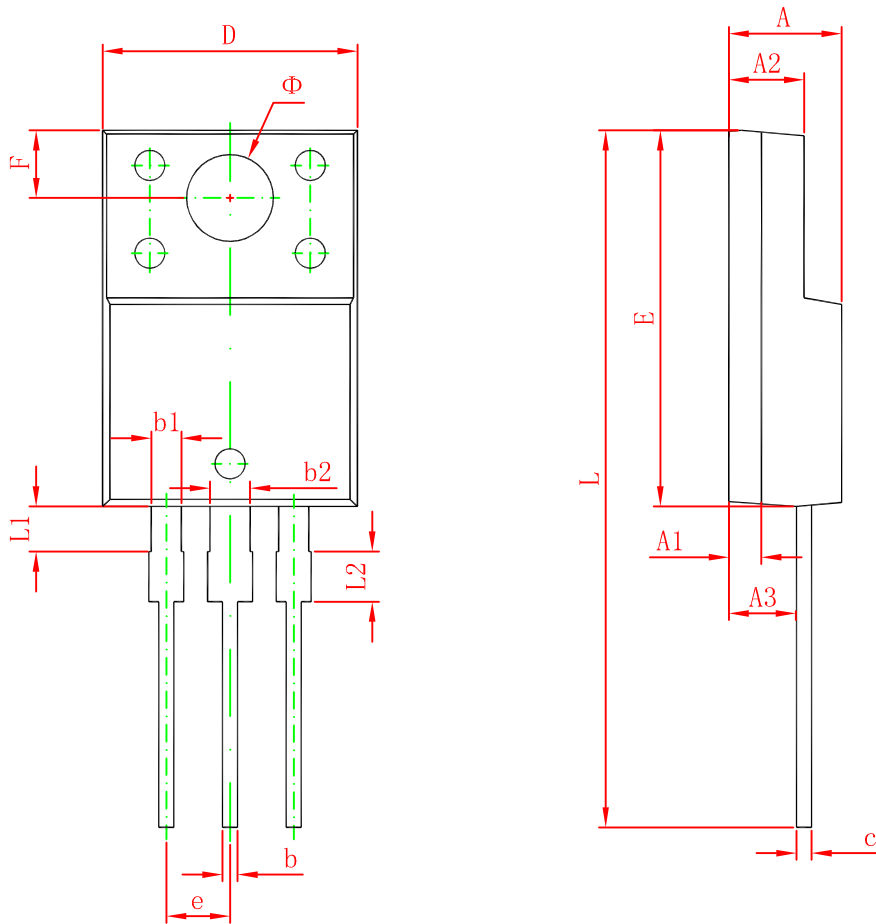
Notes :

1. $L=16.8mH, I_L=5A, V_{DD}=50V, R_G=25\Omega$, Starting $T_J=25^\circ\text{C}$.
2. Pulse Test: Pulse width $\leq 300\mu s$, duty cycle $\leq 2\%$.
3. These parameters have no way to verify.

Typical Characteristics



TO-220F Package Outline Dimensions



Symbol	Dimensions In Millimeters		Dimensions In Inches	
	Min.	Max.	Min.	Max.
A	4.300	4.700	0.169	0.185
A1	1.300 REF.		0.051 REF.	
A2	2.800	3.200	0.110	0.126
A3	2.500	2.900	0.098	0.114
b	0.500	0.750	0.020	0.030
b1	1.100	1.350	0.043	0.053
b2	1.500	1.750	0.059	0.069
c	0.500	0.750	0.020	0.030
D	9.960	10.360	0.392	0.408
E	14.800	15.200	0.583	0.598
e	2.540 TYP.		0.100 TYP.	
F	2.700 REF.		0.106 REF.	
Φ	3.300	3.700	0.130	0.146
L	28.000	28.400	1.102	1.118
L1	1.700	1.900	0.067	0.075
L2	0.900	1.100	0.035	0.043